



University of  
South Australia

# RESEARCH DEGREES

DOCTOR OF PHILOSOPHY (PhD)  
PROFESSIONAL DOCTORATE  
MASTERS BY RESEARCH



# Contents

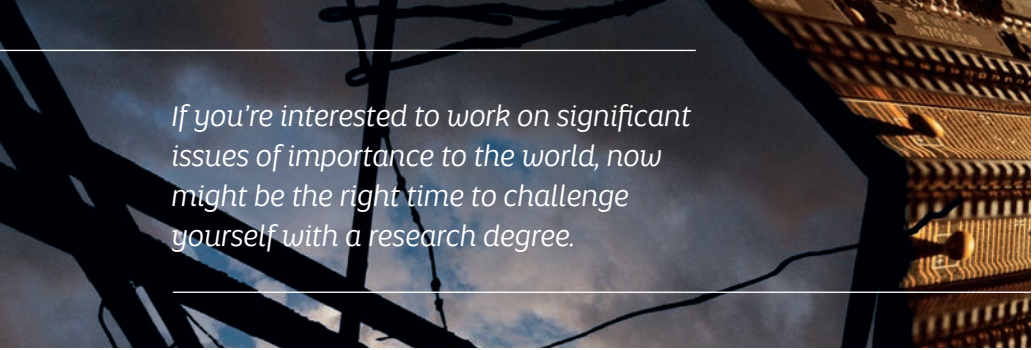
---

- 02 | **Our Diversity**
- 03 | **Our City: Adelaide**
- 04 | **Australia's University of Enterprise**
- 06 | **Research Themes**
- 07 | **Research Degrees**
- 08 | **The Transformed PhD**
- 09 | **Enhance your Research**
- 10 | **Our Candidates**
- 12 | **How to become a Research Candidate**
- 16 | **Scholarships**
- 18 | **Get in Touch**



*RESILIENCE AND VULNERABILITY: IMAGES OF RESEARCH 2017 FIRST PRIZE WINNER:*  
**JELINA HAINES**, PhD CANDIDATE, DIVISION OF INFORMATION TECHNOLOGY,  
ENGINEERING AND THE ENVIRONMENT

*ON THE COVER:* **DR DEMI GAO**  
PHD GRADUATE (2016), DIVISION  
OF INFORMATION TECHNOLOGY,  
ENGINEERING AND THE ENVIRONMENT



---

*If you're interested to work on significant issues of importance to the world, now might be the right time to challenge yourself with a research degree.*

---

You may be currently studying or have significant professional experience and want to channel your expertise and interests into research. Wherever you are in your career, a research degree at the University of South Australia can help you achieve your goals.

At the University of South Australia, you will benefit from a research environment with dedicated world-class researchers and extensive connections to industry, government and communities. A research degree provides intellectual, creative and practical challenges. It will enhance opportunities to bring your research to a wider audience.

We're empowering our research candidates to achieve research excellence with career relevance. Our Transformed PhD connects candidates to grand challenges, provides skills development with a career orientation and offers opportunities for candidates to engage with end-users of research and world-class researchers in their discipline.

I hope this introduction to our research degrees is useful to you. I invite you to investigate our website to find out more information ([unisa.edu.au/research/degrees](https://unisa.edu.au/research/degrees)), and to get in touch with our researchers. I would be delighted to welcome you as a PhD, Professional Doctorate or Masters by Research candidate at the University of South Australia.



**PROFESSOR PAT BUCKLEY,**  
DEAN OF GRADUATE STUDIES

# Our Diversity

Candidates from more than 50 countries are undertaking research degrees at the University of South Australia.

Our global reach allows candidates from around the world to contribute to our rich research environment.

The University of South Australia has dedicated staff to assist you throughout your candidature.

Our services include:

**Research Education Support Activities**

[unisa.edu.au/researcheducation](https://unisa.edu.au/researcheducation)

**Student Services**

[unisa.edu.au/student-services](https://unisa.edu.au/student-services)

**Counselling Services**

[i.unisa.edu.au/students/student-support-services/counselling](https://i.unisa.edu.au/students/student-support-services/counselling)

**Accommodation Services**

[study.unisa.edu.au/accommodation/student-accommodation](https://study.unisa.edu.au/accommodation/student-accommodation)



*I joined UniSA for my PhD due to research expertise in my area of interest, pharmacometrics. During my PhD, our collaboration with a South Australian industry partner granted me the opportunity to not only do academic research but also to contribute to translating that research into marketable, safe and effective medicine for the wider community.*

**DR AHMAD ABUHELWA**

PHD GRADUATE (2017),  
DIVISION OF HEALTH SCIENCES



# Our City: Adelaide

**Adelaide is a welcoming, vibrant, multicultural city with a population of 1.2 million people and is ranked the world's fifth most liveable city (Economist Intelligence Unit, 2017). If you're new to Adelaide it will soon become your home away from home.**

- Adelaide enjoys hot, dry summers and mild winters.
- The city is host to more than 400 food, arts and cultural events each year.
- There are many places to explore: the Adelaide Central Market, which has been a thriving hub for more than 148 years; Adelaide Hills where you can discover the magic of small towns and wildlife in abundance; and beautiful beaches for swimming and snorkelling.



# Australia's University of Enterprise

**Our research is inventive and adventurous and we create new knowledge that is central to global economic and social prosperity. That's why we're Australia's University of Enterprise.**

The University's strong industry links and global engagement ensure our research degree candidates gain the experience and expertise required to make an impact in their career. Our researchers tackle significant real world challenges, and are committed to translating new knowledge into outcomes and building partnerships with end-users from industry, government and communities.

## TOP 10 UNIVERSITY IN AUSTRALIA

TIMES HIGHER EDUCATION  
RANKINGS 2018

## NO.1 YOUNG UNIVERSITY IN AUSTRALIA FOR INDUSTRY INCOME

2017 THE TOP 200 UNDER 50

## AUSTRALIA'S YOUNGEST UNIVERSITY TO RECEIVE FIVE-STARS IN RESEARCH

Q5 STARS RANKING 2017

*I'm working collaboratively with industry on the development of new optical materials which can be used in sensors for autonomous or driverless cars.*

### **ROYA RUDD**

PHD CANDIDATE,  
DIVISION OF INFORMATION  
TECHNOLOGY, ENGINEERING  
AND THE ENVIRONMENT



*My research explores health-related quality of life for children living with cerebral palsy. Working with my supervisory panel is rewarding and stimulating, and their input has ensured my research benefits from cutting-edge expertise in health economics and quality of life measurement. My panel includes experts from academia and the medical profession at the Women's and Children's Hospital in Adelaide.*

**CHRISTINE MPUNDU-KAAMBWA**

PHD CANDIDATE, UNIVERSITY OF  
SOUTH AUSTRALIA BUSINESS SCHOOL



*My research project examines the causal drivers of depression in people with chronic pain. A highlight has been the opportunity to collaborate with world class researchers and educators. Coming from a purely clinical background, working with high calibre researchers has opened my eyes to the existing scope and opportunities to have an impact on healthcare at a broader level.*

**CAMERON DICKSON**

MASTERS BY RESEARCH CANDIDATE,  
DIVISION OF HEALTH SCIENCES

*As a self-employed artist of over 20 years, a research degree gives me the opportunity to devote time to developing a new direction for my practice. I have a passion for the health and wellbeing benefits of engagement in the arts, and have been researching connection to landscape and how this has an effect on our wellbeing. My supervisors have lived and worked overseas, which helps shape an international context to my research.*

**BRIDGETTE MINUZZO**

PHD CANDIDATE, DIVISION OF EDUCATION,  
ARTS AND SOCIAL SCIENCES



# Research Themes

The rapid pace of global change is driving many new social, economic and environmental challenges. Research at the University of South Australia has been positioned around six key themes to ensure we deliver solutions that respond to the most pressing needs of our world today.

Each of our themes is broad in nature, with a current focus on grand challenges for our state.

## An Age Friendly World

An Age Friendly World will shed light on how individuals at every stage in the life course can achieve their potential: *How can we enable and support active ageing across a lifespan?*

## Scarce Resources

This research theme focuses on working with communities to create and implement sustainable solutions that restore, protect and optimise resources: *How can we eliminate waste?*

## Healthy Futures

This research theme encompasses a holistic view of health, including physical, mental, social, environmental, and community health research: *How we can build, sustain and strengthen mental health in our communities?*

## Transforming Industries

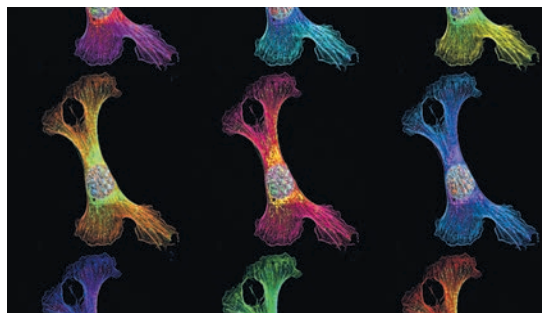
Research in this theme is prioritising sustainable use of our resources to optimise long-term economic, social and environmental benefit to the community: *How can we provide sustainable and stable energy?*

## Cancer

This research theme focuses on the prevention and treatment of cancers: *How can we reduce the burden of cancer and its progression on society?*

## Transforming Societies

Examining changes in the world and how it impacts our lives as individuals, families, organisations, and communities: *How do we reduce inequality?*





# Research Degrees

---



*Challenge yourself.  
Enhance your career.  
Make your ideas public.  
Contribute to society.*

## What is a research degree?

A research degree is an advanced program of study allowing you to investigate a topic of interest to you. Under the supervision of world-class researchers, you will learn and apply advanced research methodologies to produce new knowledge and provide solutions to challenges within your discipline area.

## Why do a research degree?

If you have a naturally inquisitive mind, enjoy problem solving and have a drive to actively improve the world we live in, a research degree gives you the opportunity to pursue those interests. Completing a research degree means becoming an expert in your field.

**PICTURED: DR MAHMOUD BASSAL,**  
PhD GRADUATE (2017), DIVISION OF  
HEALTH SCIENCES

## Doctor of Philosophy (PhD) (3–4 Years)

Doctor of Philosophy candidates prepare a substantial piece of work (thesis or exegesis), which represents a significant contribution to their chosen field. PhD graduates will be capable of independently planning and executing original research that generates new knowledge.

## Professional Doctorate (3–4 Years)

A professional doctorate is a rigorous program of advanced study and research designed to meet the needs of industry and professional groups. Professional doctorates usually consist of a blend of coursework and research.

## Masters by Research (up to 2 years)

Masters by research candidates learn, under supervision, how to analyse a thesis topic at an advanced level and apply research methodology and techniques.

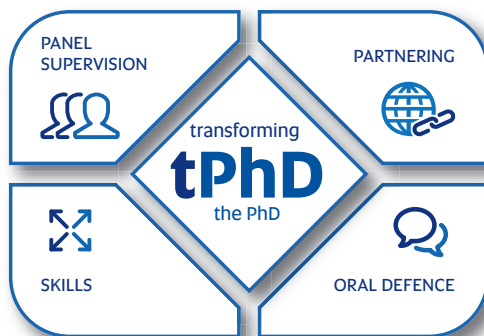
# The Transformed PhD

Every candidate is supported by a **supervisory panel** consisting of expert academic supervisors, enabling multidisciplinary expertise, and end-user advisors from outside of the University.

Our **partnering** strategy enhances end-user collaboration. You will be supported to engage with partners through placements, projects and mentoring.

Embedded in our program is the opportunity to take part in flexible professional development. The University of South Australia's **skills** model has been designed to support you in not only delivering research excellence, but also provides career-focused skills and experiences.

PhD candidates participate in the **oral defence** of the thesis, which is an in-depth discussion of their research with their examiners. The oral defence allows you to interact with internationally-recognised researchers who are thought leaders in their fields.



*The Transformed PhD (tPhD) is an important initiative of the University of South Australia. In our innovative approach to research training, our aim is to offer programs that connect PhD candidates to partnered grand challenges, provide skills development in the context of career orientation, and give opportunities to engage with end-users of research and with world-class researchers in their discipline.*

**PROFESSOR PAT BUCKLEY**  
DEAN OF GRADUATE STUDIES

# Enhance your Research

There are a number of opportunities and ways to enrich your research project and develop research and professional skills, including:

Engage with **world-class research** through symposia, colloquia and presentations. Participate in research discussion and debate within your discipline and outside your chosen field.

Improve your **employability** by participating in career-orientated workshops and development activities available throughout your candidature. Options are available on campus and online.

**Pitch your research to partners** and boost your communication skills through the Three Minute Thesis (3MT®), a national competition celebrating research undertaken by PhD candidates.

**Expand your networks** through attending national or international conferences, and connect with **research grand challenges** through industry experiences.



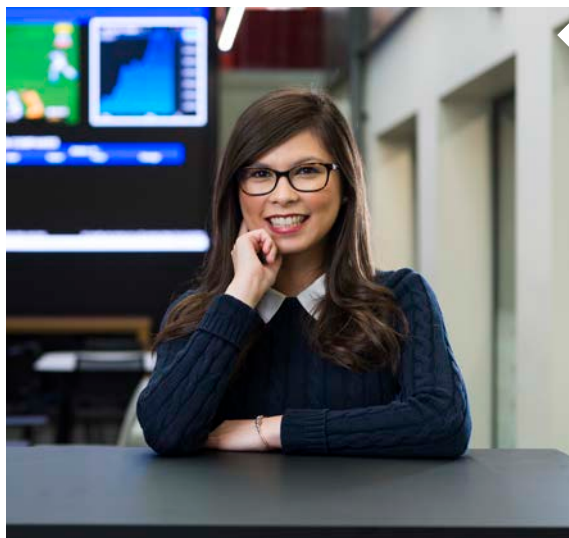
*Attending an international conference on learning analytics and knowledge has been a highlight of my doctoral training. It is very rewarding to be exposed to innovative and cutting-edge thinking in your discipline, and to have a sense that there is a community of scholars working on similar problems.*

## **DR SASHA POQUET**

PHD GRADUATE (2017), DIVISION OF EDUCATION, ARTS AND SOCIAL SCIENCES



# Our Candidates



*My research is a unique and novel contribution to the existing literature in the area of media and advertising. It is very satisfying knowing that my research will genuinely help industry practitioners improve their media and advertising decisions. As a result of pursuing a research degree at UniSA, I will possess a versatile suite of skills beneficial to careers in academia and industry, increasing my chances of employment upon graduation.*

## **YOLANDA NGUYEN**

MASTERS BY RESEARCH CANDIDATE,  
UNIVERSITY OF SOUTH AUSTRALIA  
BUSINESS SCHOOL

*Working with a supervisory panel has been very beneficial. Speaking with people who are experienced, not just on my topic — the impact of drug use and its effect on how we activate our muscles — but in research generally. This has helped me in my planning and moving forward.*

## **PATRICK FAULKNER**

PHD CANDIDATE,  
DIVISION OF  
HEALTH SCIENCES





*My research involves the investigation of individual and contextual factors impacting adult second language learning. Networking with industry was very beneficial, it helped me gain deeper insights into my PhD project by reflecting on the bridge between theory and practice.*

**DR Omid MEHRABI-YAZDI**  
PhD GRADUATE (2018),  
DIVISION OF EDUCATION,  
ARTS AND SOCIAL SCIENCES

*My research holds the potential to reduce lead exposure for future generations in Broken Hill and Port Pirie. The results can then be applied to other parts of Australia which may be similarly impacted by lead, due to decades of industrial activity.*

*So far in my candidature I have presented at four conferences, two of which were in Europe, and I have represented my Division in the Three Minute Thesis competition.*

**FARZANA KASTURY**  
PHD CANDIDATE, DIVISION OF  
INFORMATION TECHNOLOGY,  
ENGINEERING AND THE ENVIRONMENT





# How to become a Research Candidate



1

IDENTIFY A RESEARCH TOPIC



2

CHECK YOUR ELIGIBILITY



3

SEARCH FOR A SUPERVISOR



4

FIND A SCHOLARSHIP



5

APPLY

## TOP TIP

*Choose a research topic you're interested in. You will have a much more positive experience if you are working on a problem or in a field you really enjoy.*

### JOHN MCGUIRE

PHD CANDIDATE, DIVISION OF INFORMATION TECHNOLOGY, ENGINEERING AND THE ENVIRONMENT

*It has always been my desire to inspire interest in science, to identify and nurture talented students, and to provide research training, particularly in research design and communication of results.*

**ASSOCIATE PROFESSOR JILLIAN DORRIAN**  
GRADUATE RESEARCH SUPERVISOR, DIVISION OF EDUCATION, ARTS AND SOCIAL SCIENCES

**WINNER: 2017 AUSTRALIAN COUNCIL OF GRADUATE RESEARCH AWARD FOR EXCELLENCE IN GRADUATE RESEARCH SUPERVISION**





# 1

## IDENTIFY A RESEARCH TOPIC

To ensure all research candidates have a rewarding and active research environment, we encourage applications from prospective candidates whose research topic aligns with our areas of research expertise. We invite you to explore and discover our research and researchers using the University's online Directory of Research Expertise (DORE) [unisa.edu.au/DORE](http://unisa.edu.au/DORE).

Our research areas also fit broadly into the disciplines below.

### Business and Law

- Accounting
- Applied Economics
- Arts Management
- Finance
- Human Resources and Organisation Behaviour
- International Business
- Law
- Management and Corporate Social Responsibility
- Marketing
- Property
- Sports, Tourism and Leisure Management

For more information about research possibilities, contact  
[PhDEnquiriesBusiness@unisa.edu.au](mailto:PhDEnquiriesBusiness@unisa.edu.au)

### Health and Medical Sciences

- Cancer Biology
- Health Sciences
- Human Movement
- Laboratory Technology (Masters only)
- Medical Radiation
- Medical Science
- Nursing
- Occupational Therapy
- Pharmaceutical Science (Masters only)
- Pharmacology (PhD only)
- Pharmacy
- Physiotherapy
- Podiatry
- Population Health
- Public Health

For more information about research possibilities, contact [HSC-HealthResearch@unisa.edu.au](mailto:HSC-HealthResearch@unisa.edu.au)

### Education, Arts and Social Sciences

- Architecture
- Australian Studies
- Communication
- Design (Industrial)
- Design (Visual Communication)
- Education
- Indigenous Studies
- Interior Architecture
- International Studies
- Languages and Linguistics
- Psychology (PhD only)
- Social Work and Social Policy
- Sociology
- Visual Arts

For more information about research possibilities, contact  
[EASResearchStudents@unisa.edu.au](mailto:EASResearchStudents@unisa.edu.au)

### Engineering, Science and Technology

- Applied Physics
- ATN Industry Doctoral Training Centre
- Bioinformatics
- Biomaterials Engineering and Nanomedicine
- Civil Engineering
- Computer and Information Science
- Construction Management
- Electrical and Information Engineering
- Energy and Advanced Manufacturing
- Environmental Science and Engineering
- Environmental Science
- Geographic Information Science
- Mathematics
- Mechanical and Manufacturing Engineering
- Minerals and Resources
- Project Management
- Statistics
- Systems Engineering

For more information about research possibilities, contact [research.itee@unisa.edu.au](mailto:research.itee@unisa.edu.au)



## 2

## CHECK YOUR ELIGIBILITY

Your eligibility to become a research candidate at the University depends on the type of degree you wish to study, as well as your prior qualifications and professional experience. Candidates from non-English speaking countries will also need to demonstrate their capacity to undertake study in English before being accepted into a program.

**The eligibility criteria listed below are a minimum. Eligibility is also subject to the assessment of the proposed research, the availability of a supervisor and any school or research-specific requirements.**

Degree	Minimum eligibility requirements
<b>PhD</b>	<i>Honours 1, Honours 1 equivalence, Honours 2A, Honours 2A equivalence or an appropriate master degree or equivalent (your qualifications will be assessed).</i> OR Individual assessment of qualifications and research capabilities as proven through evidence of professional work experience in the field of proposed study and by relevant quality publications. The outcome of this assessment will determine which of the degree options are available to you.
<b>Professional Doctorate</b>	<i>Honours 1, Honours 1 equivalence, Honours 2A, Honours 2A equivalence or an appropriate master degree or equivalent (your qualifications will be assessed).</i> OR Individual assessment of qualifications and research capabilities as shown through evidence of professional work experience in the field of proposed study and by relevant quality publications. The outcome of this assessment will determine which of the degree options are available to you. Professional Doctorate candidates must also demonstrate at least five years practice in a relevant field, normally within the last ten years.
<b>Masters by Research</b>	<i>An Honours degree or a bachelor degree with Honours or a relevant bachelor degree (or equivalent) of at least three years with a minimum credit average, or an appropriate master degree (your qualifications will be assessed for equivalence).</i> OR No tertiary qualifications, but you can demonstrate research capabilities through evidence of professional work experience in the field of proposed study and by relevant publications.

Minimum English language entry requirements for international research candidates.

English Language Test (see Note 1)	Score
IELTS (International English Language Testing System) Academic	7.0 for English language-rich programs with a minimum of 6.0 in each sub-score (see Note 2) 6.5 for non-English language-rich programs with a minimum of 6.0 in each sub-score (see Note 2)
OR	
Corresponding results from an equivalent test such as Test of English as a Foreign Language (TOEFL); the University of Cambridge English for Speakers of Other Languages (ESOL) Examinations for the Certificate of Proficiency in English (CPE) or the Certificate in Advanced English (CAE); the Pearson test; or the appropriate academic English language level delivered by the Centre for English Language at the University of South Australia (CELUSA).	
Applicants from countries where English is an official language or who have had recent and relevant experience in an English setting may meet our minimum English entry requirements in a number of alternative ways. Evidence must be provided.	
<a href="https://unisa.edu.au/research-degree-english-language-requirements">unisa.edu.au/research-degree-english-language-requirements</a>	



## 3

### SEARCH FOR A SUPERVISOR

Research supervisors at the University of South Australia provide expert supervision across an impressive range of research disciplines. Many candidates come to the University to work with specific researchers and learn directly from their expertise and experience.

**Tips on finding a supervisor can be found on the research degrees website:**

[unisa.edu.au/find-a-supervisor](https://unisa.edu.au/find-a-supervisor)



## 4

### FIND A SCHOLARSHIP

A variety of scholarships and funding opportunities are available to help support you financially throughout your studies. These include a wide range of grants and stipends.

Scholarships will normally have specific opening and closing dates – make sure you read the criteria and application requirements.

If you are applying for a scholarship, you should indicate this when you apply for your research degree. Our online application system will ask for this information.

**For more details about scholarship opportunities visit:** [unisa.edu.au/research/degrees/scholarships](https://unisa.edu.au/research/degrees/scholarships)



## 5

### APPLY

You should prepare these things before you commence your online application:

- Two referee reports. Find out more at: [unisa.edu.au/research-degree-referee-reports](https://unisa.edu.au/research-degree-referee-reports)
- Transcripts and parchments of undergraduate, honours and postgraduate courses undertaken
- Certification of English language proficiency
- Passport details or evidence of citizenship
- Outline of your proposed research
- Current CV or resume
- Evidence of publications.

**For more information please visit:** [unisa.edu.au/research-degrees-apply](https://unisa.edu.au/research-degrees-apply)

You are now ready to apply.

**Apply for entry into your program at:** [unisa.edu.au/applyonline](https://unisa.edu.au/applyonline)

**Note 1:** Results from IELTS, University of Cambridge ESOL examinations and TOEFL are generally valid for two years and must be valid at time of commencement. For scholarships, test results must be valid at the scholarship closing date.

**Note 2:** To determine which programs are language-rich and which are not, please visit: [unisa.edu.au/research-degree-english-language-requirements](https://unisa.edu.au/research-degree-english-language-requirements)

# Scholarships

## Research degree scholarships are awarded on a competitive basis.

There are various types of scholarships available for high-achieving domestic and international applicants. Scholarships normally provide one or more of the following types of support:

### Living allowance

A living allowance scholarship, also known as a stipend, provides fortnightly payments to help with living expenses.

### Tuition fees

Most domestic candidates are eligible for the Commonwealth Government Research Training Program fee offset.

International candidates may apply for scholarships that include a tuition fee scholarship which covers the cost of the fees.

More information on fees is available online at [unisa.edu.au/Research/Research-degrees/Fees-for-research-degree-students/](https://unisa.edu.au/Research/Research-degrees/Fees-for-research-degree-students/)

### Other funding

Some scholarships provide top-up funding to the living allowance, some fund particular opportunities, such as conference travel costs, while others include support for costs associated with the research project, or expenses like overseas student health cover.

Find out more about the types of scholarships we offer at [unisa.edu.au/research/degrees/scholarships/](https://unisa.edu.au/research/degrees/scholarships/)

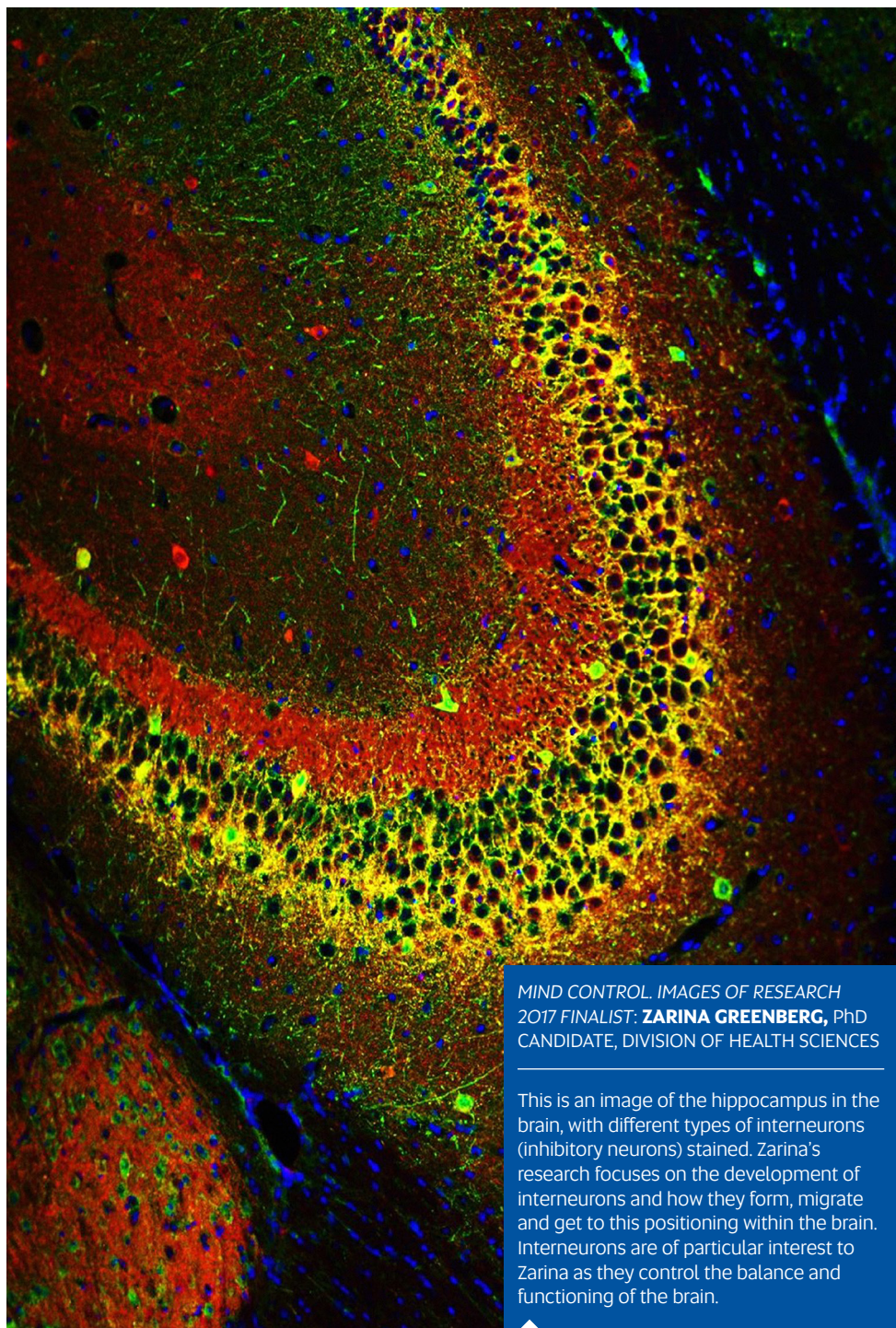
*I was fortunate enough to receive two scholarships – the Research Training Program scholarship (living allowance) and the Vice Chancellor and President's Scholarship (VCPS) (money for research-related activities). The VCPS has been extremely helpful to fund certain aspects of my research – such as equipment.*

### FELICITY BRAITHWAITE

PhD CANDIDATE,  
DIVISION OF HEALTH SCIENCES







*MIND CONTROL. IMAGES OF RESEARCH*  
2017 FINALIST: **ZARINA GREENBERG**, PhD  
CANDIDATE, DIVISION OF HEALTH SCIENCES

This is an image of the hippocampus in the brain, with different types of interneurons (inhibitory neurons) stained. Zarina's research focuses on the development of interneurons and how they form, migrate and get to this positioning within the brain. Interneurons are of particular interest to Zarina as they control the balance and functioning of the brain.

# Get in Touch

---

## **Find out more about research degrees at the University of South Australia**

[unisa.edu.au/research/degrees/](https://unisa.edu.au/research/degrees/)

If you have any queries about undertaking a research degree at the University of South Australia, we invite you to contact the Graduate Research team. They will be able to provide you with further information, or assist you in finding a supervisor in your area of research interest.

For discipline-specific information please see our research degree program pages [study.unisa.edu.au](https://study.unisa.edu.au)

### **Graduate Research: Student and Academic Services**

p: +61 8 8302 5880  
f: +61 8 8302 0828  
e: [research.degrees@unisa.edu.au](mailto:research.degrees@unisa.edu.au)  
Level 1, 101 Currie Street  
Adelaide SA 5000  
Australia

### **Graduate Research: Student and Academic Services**

GPO Box 2471  
Adelaide SA 5001  
Australia



### **Acknowledgement of Country**

*UniSA respects the Kurna, Boandik and Barngarla peoples' spiritual relationship with their country and also acknowledge the diversity of Aboriginal peoples, past and present.*

***Find out more about the University's commitment to reconciliation at [unisa.edu.au/RAP](https://unisa.edu.au/RAP)***