



We centre Aboriginal Peoples' right to self-determination and ways of Knowing, Being and Doing in business and research partnerships.

UniSA rightfully acknowledge Aboriginal Peoples and communities as knowers, thinkers and innovators – and important industry partners.

UniSA's Aboriginal Research and Engagement team can:

- guide ethical, culturally-safe and responsive partnership and research
- connect Aboriginal Business to programs supporting growth, scale and innovation
- identify grant and funding opportunities
- advise on Aboriginal research priorities relevant to industry
- connect industry with Aboriginal researchers and community stakeholders
- direct philanthropic contributions for greatest impact to support Aboriginal students, staff and research
- support Work Integrated Learning and student-based research projects.

New career pathways for Aboriginal Peoples through philanthropy

BAE Systems Australia and UniSA's partnership:




-  creates a career pathway for Aboriginal People to pursue careers in STEM
-  helps address Australia's engineering skills and labour shortage
-  channels philanthropic efforts to increase support for Aboriginal students studying at UniSA

BAE Systems Australia has partnered with UniSA to offer its inaugural First Nations Scholarship in Engineering. The scholarship financially supports students enrolled in an undergraduate engineering program and is part of the company's increased efforts to encourage Aboriginal Peoples to pursue a career in STEM.

Philanthropic efforts like this not only provide more opportunities for Aboriginal Peoples but also creates a pipeline of local talent, promotes employee recruitment and retention in industry.

Shaping the future of Aboriginal tourism

UniSA's research impact:

-  supports Aboriginal tourism operators
-  influences tourism industry and policymakers
-  supports Aboriginal Peoples and communities to achieve economic self-determination

Many Aboriginal tourism operators in Australia are ready for tourists, but while Australians are keen to engage in Aboriginal tourism, many are yet to.

Dr Skye Akbar, a Waljen woman and Enterprise Fellow at UniSA Business, is working to change that. She is using a collaborative community participatory research approach with Aboriginal tourism stakeholders to develop a collaborative marketing approach for tourism operators in remote areas.

Dr Akbar's research is directly helping operators develop and implement marketing strategies that will increase engagement with Aboriginal tourism.

"Our goal is to use best practice business research methods to work with Aboriginal tourism operators, and their economic ecosystems, to support their self-determined economic participation through tourism."



Dr Skye Akbar, PhD
UniSA Business

"Our scholarships are aimed at reducing barriers for First Nations Peoples to participate in STEM higher education and to raise aspirations to pursue a career in defence."



Angela Wiggins
Chief People Officer
BAE Systems Australia

UniSA's world-leading technology and research expertise in a culturally-safe and responsive environment

The Aboriginal Research and Engagement team operates across 13 industry sectors, with 3,000 expert academics, 30+ world-class research groups, 37,000+ students and 2,500+ industry partners within your reach.

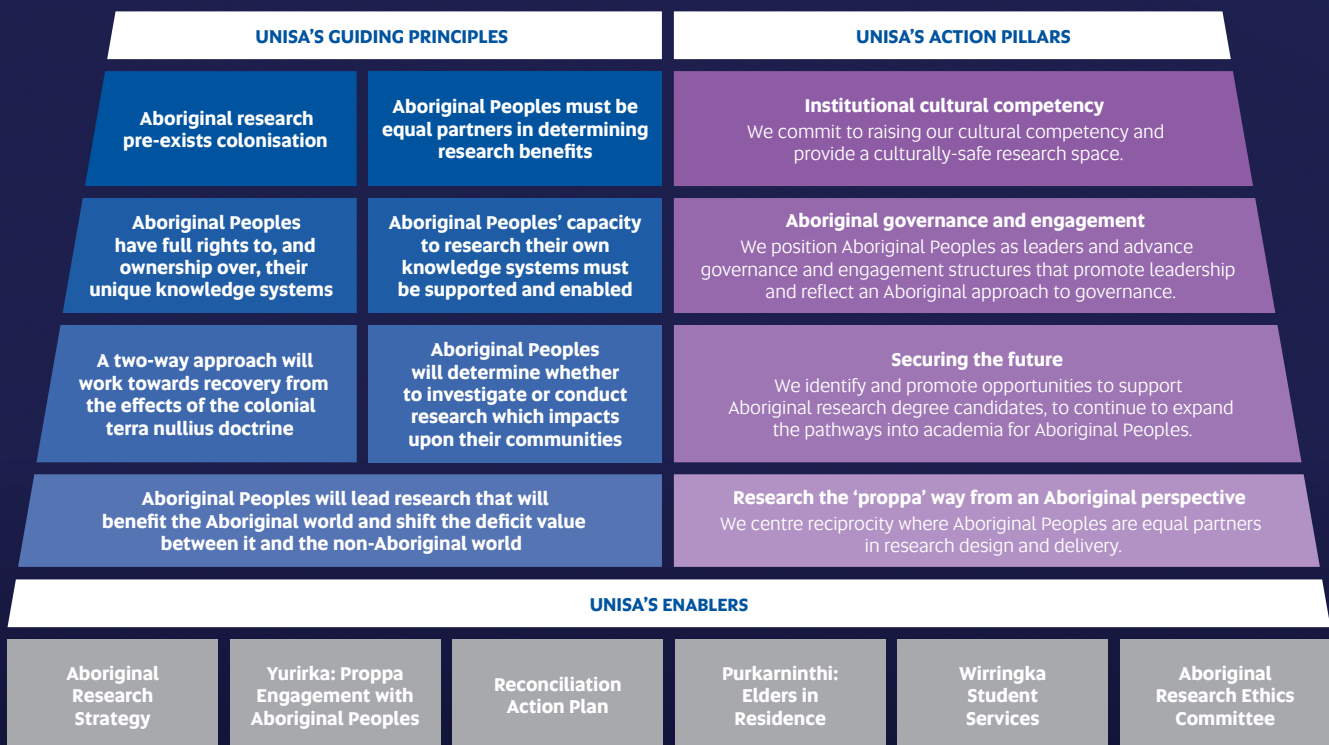
UniSA's Enterprise Hub is here to help you solve challenges and grow at scale. We can connect you to leading experts, help you engage with highly-skilled students and provide access to facilities, technology and IP.



Partner with us to uncover the ideas, solutions and connections that will make your business unstoppable.

Visit unisa.edu.au/enterprisehub

Our Aboriginal Research and Engagement team can help you grow, learn and connect



"At the Enterprise Hub, we work alongside Aboriginal businesses, researchers, and communities to drive innovation, growth and self-determined success. Let's collaborate to shape a future that respects and celebrates Aboriginal ways of Knowing, Being and Doing." - Sophie Murray



Sophie Murray
Dieri & Arabana

Partner Engagement Manager: Aboriginal Research

t. +61 403 115 930 e. sophie.murray@unisa.edu.au