

# Division of Education, Arts and Social Sciences

Studying with UniSA



University of  
South Australia

# Division of Education, Arts and Social Sciences

- **Over 400 academic and professional staff members**
- **Five schools**
- **Many research centres**
- **Hawke Research Institute**



Professor Pal Ahluwalia  
Pro-Vice Chancellor  
Division of Education, Arts and Social Sciences

# Division of Education, Arts and Social Sciences - Schools

**School of Art,  
Architecture and  
Design**



**David Unaipon College of  
Indigenous Education  
and Research**

**School of  
Communication,  
International  
Studies and  
Languages**



**School of  
Psychology,  
Social Work and  
Social Policy**



**School of  
Education**

# School of Art, Architecture and Design

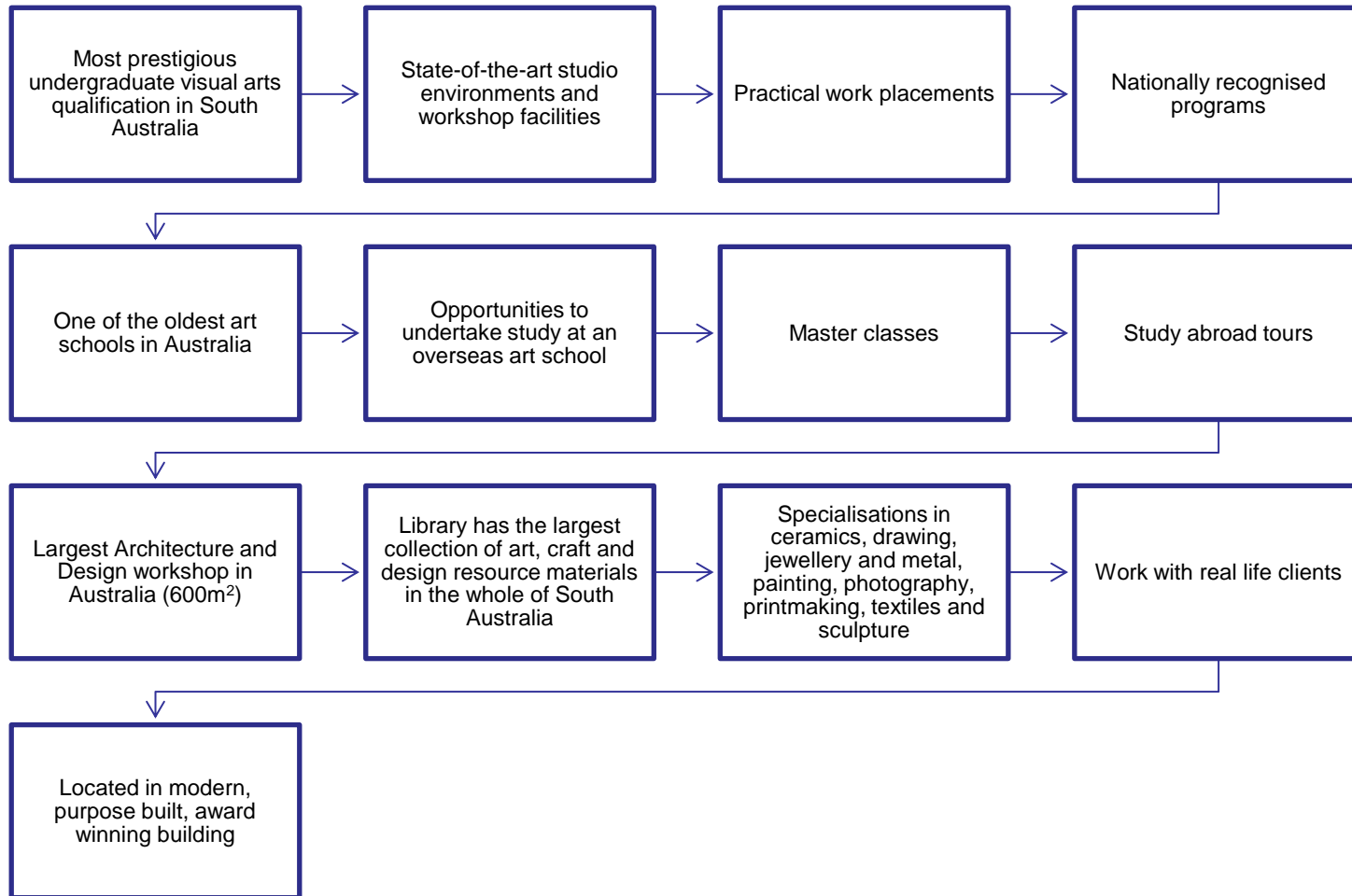
Moulding the future artists, designers and creators of the world by equipping students with skills in aesthetic appreciation and critical analysis, creative and lateral thinking, leadership and problem solving.

## Main Areas of Study:

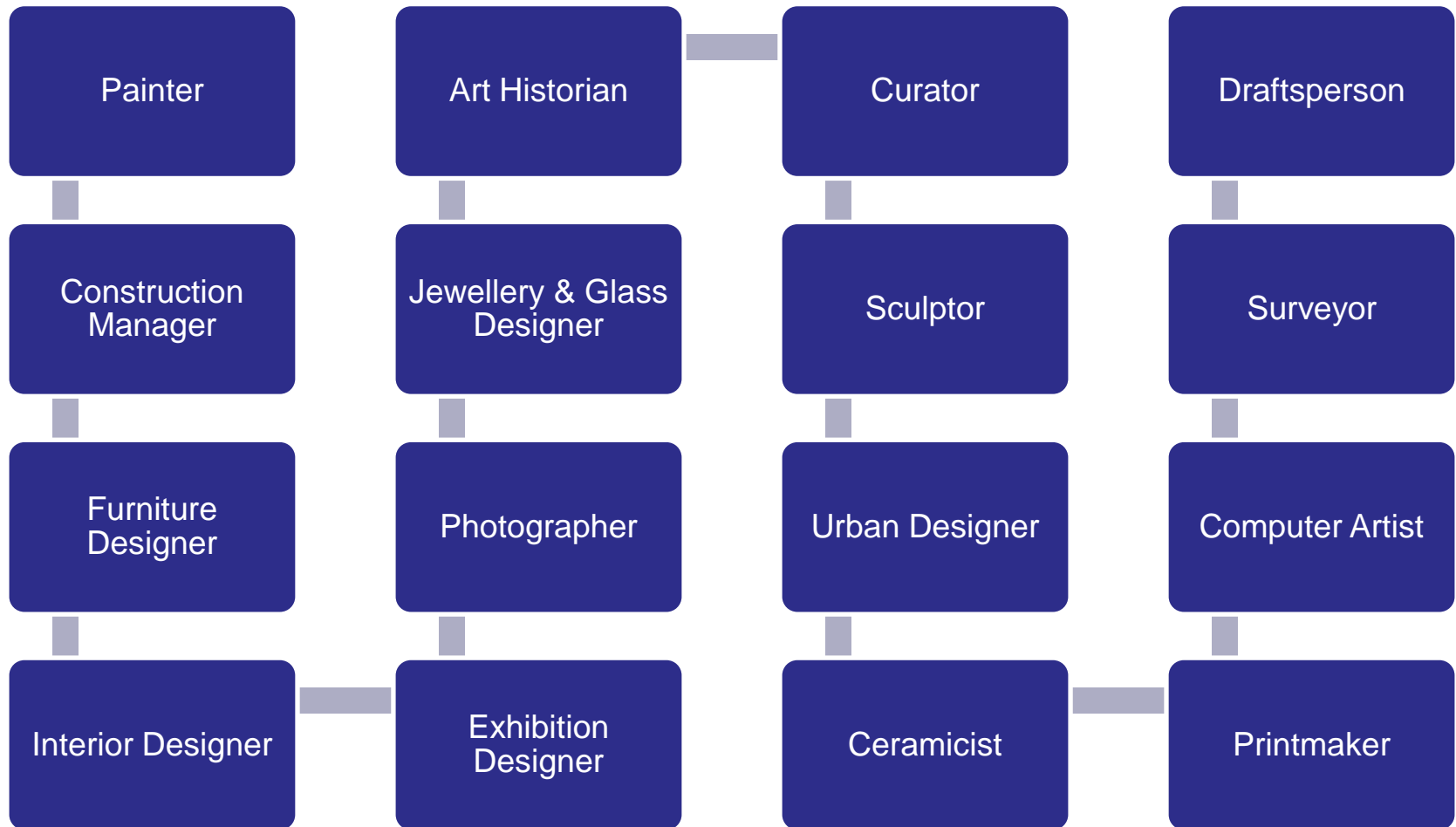
- Architecture
- Interior Architecture
- Sustainable Design
- Product Design
- Visual Arts
- Visual Communication



# Why Art, Architecture and Design?



# Career Paths – Art, Architecture and Design



# Programs and Fees – Art, Architecture and Design

Undergraduate Program	2014 Annual Fees (AUD)	2015 Annual Fees (AUD)
Architectural Studies	\$25 400	\$26 700
Design (Product Innovation)	\$23 100	\$24 300
Design (Visual Communication)	\$21 500	\$22 600
Interior Architecture	\$23 100	\$24 300
Visual Arts (Specialisation)	\$21 600	\$22 700

Postgraduate Program	2014 Annual Fees (AUD)	2015 Annual Fees (AUD)
<b>Graduate Diplomas</b>		
Sustainable Design	\$22 100	\$23 200
Visual Art and Design (Specialisation)	\$22 100	\$23 200
<b>Master Degrees</b>		
Architecture	\$27 300	\$28 700
Design (Specialisation)	\$24 300	\$25 500
Sustainable Design	\$22 100	\$23 200
Visual Art and Design (Specialisation)	\$22 100	\$23 200



# School of Communication, International Studies and Languages

The largest range of communication courses in South Australia, guiding the development of tomorrow's expert communicators.

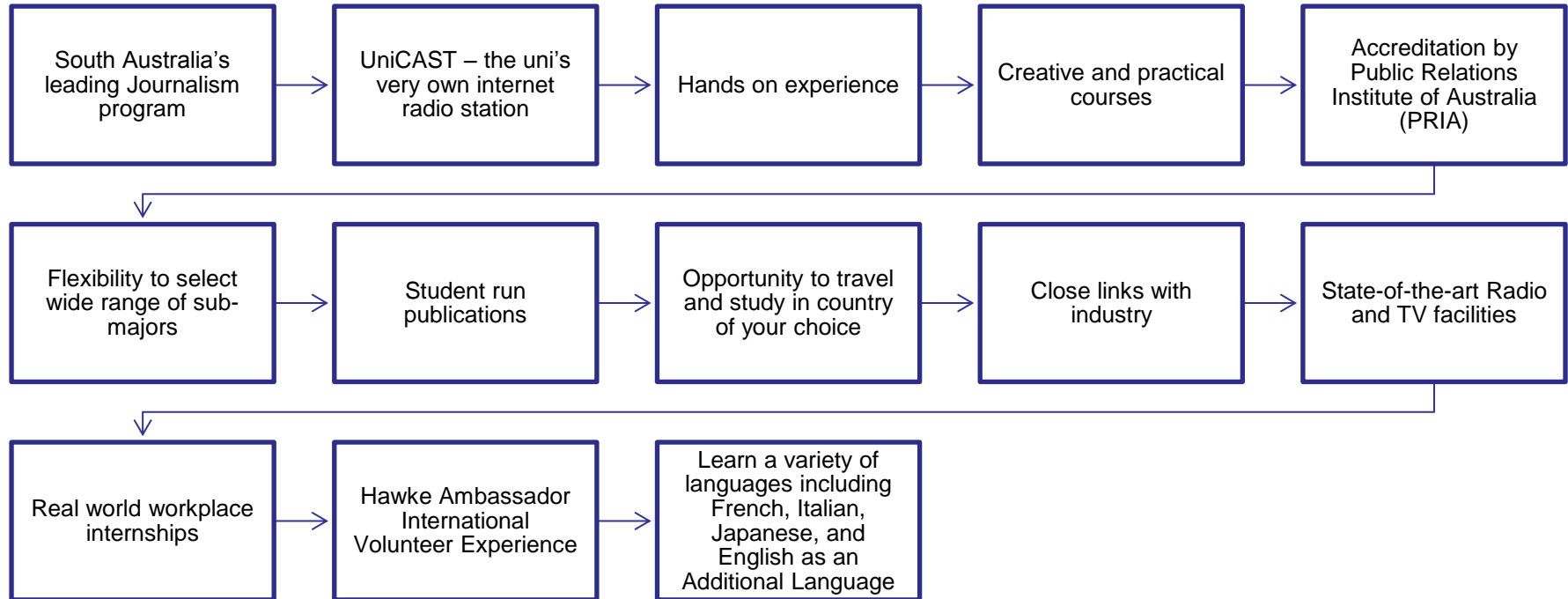
## Main Areas of Study:

- Media and Culture
- Languages and Linguistics
- International Relations
- Literature
- Creative and Professional Writing
- Public Relations
- Sociology
- Music and Theatre

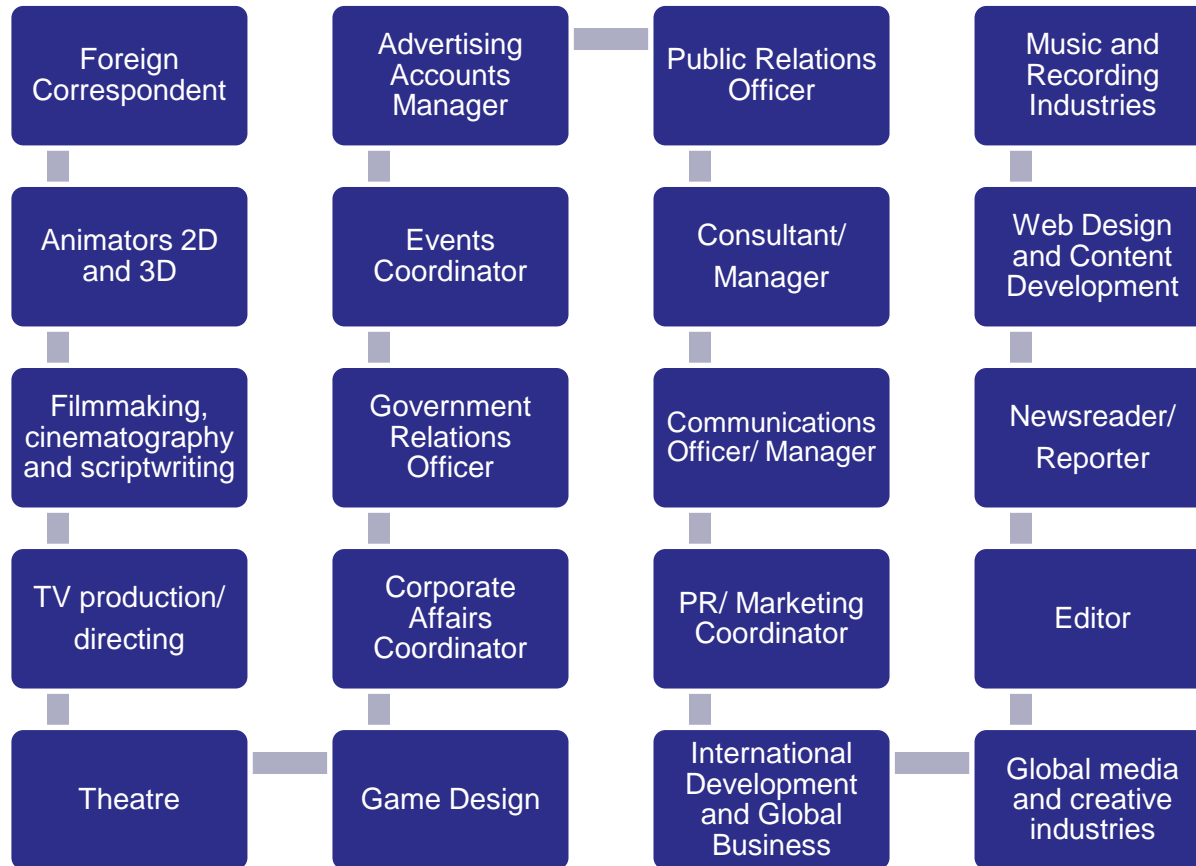




# Why Communication, International Studies and Languages?



# Career Paths – Communication, International Studies and Languages



# Programs and Fees – Communication, International Studies and Languages

Undergraduate Program	2014 Annual Fees (AUD)	2015 Annual Fees (AUD)
Arts	\$22 400	\$23 500
Arts (Communication and Media Management)	\$21 500	\$22 600
Arts (Languages and Intercultural Communication)	\$20 300	\$21 300
Arts (Writing and Creative Communication)	\$21 500	\$22 600
Communication (Media and Culture)	\$21 500	\$22 600
International Relations	\$20 300	\$21 300
Journalism	\$22 400	\$23 500
Media Arts	\$21 500	\$22 600
Public Relations	\$21 500	\$22 600
Postgraduate Program	2014 Annual Fees (AUD)	2015 Annual Fees (AUD)
<b>Graduate Diplomas</b>		
Communication (Public Relations)	\$22 400	\$23 500
Journalism	\$22 400	\$23 500
Languages and Culture Studies	\$21 500	\$22 600
<b>Master Degrees</b>		
Journalism	\$22 400	\$23 500

# School of Education

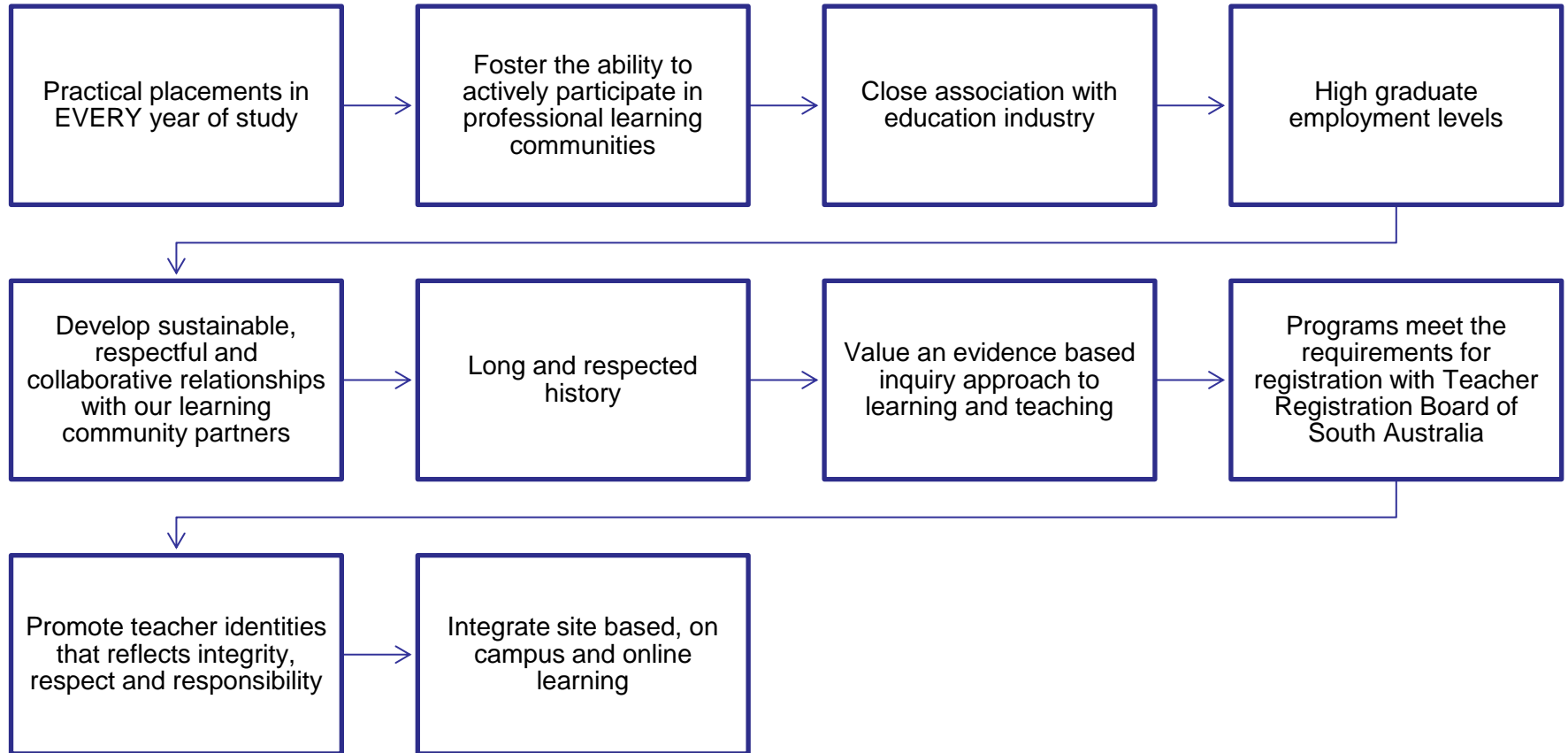
Providing the skills and experiences to produce first class graduates and leaders within education across the nation.

## Main Areas of Study:

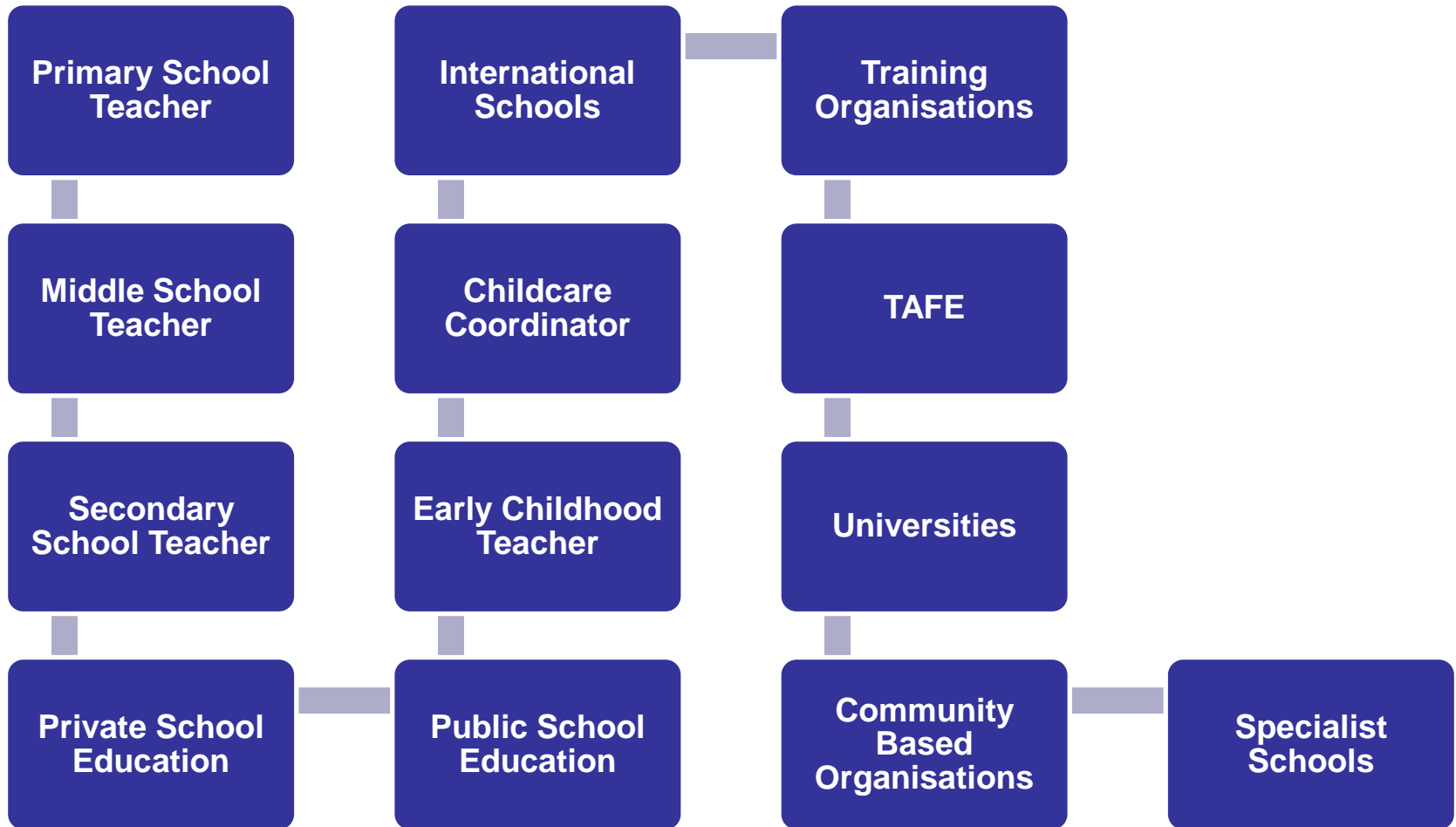
- Early Childhood
- Junior Primary and Primary
- Primary and Middle
- Middle and Secondary



# Why Education?



# Career Paths – Education



# Programs and Fees – Education

Undergraduate Program	2014 Annual Fees (AUD)	2015 Annual Fees (AUD)
Education (Early Childhood)	\$20 800	\$21 800
Education (Primary)	\$20 800	\$21 800
Education (Primary and Middle)	\$20 800	\$21 800

Postgraduate Program	2014 Annual Fees (AUD)	2015 Annual Fees (AUD)
<b><i>Graduate Diplomas</i></b>		
Education (Secondary)	\$21 400	\$22 500
<b><i>Master Degrees</i></b>		
Education	\$21 400	\$22 500
Teaching (Early Childhood)	\$21 400	\$23 100
Teaching (Primary)	\$21 400	\$23 100
Teaching (Primary and Middle)	\$21 400	\$23 100
Teaching (Secondary)	\$21 400	\$23 100

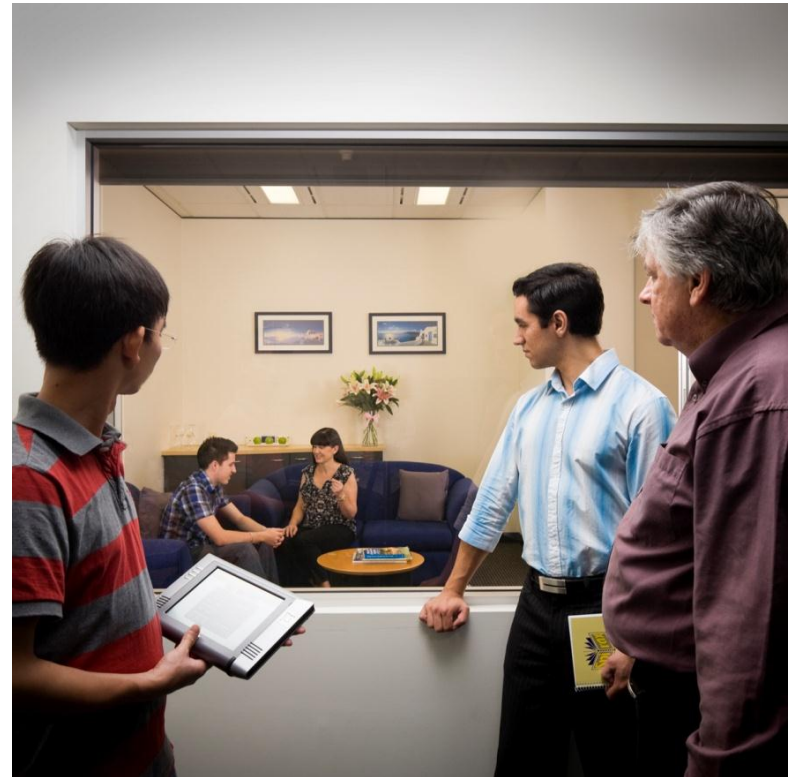


# School of Psychology, Social Work and Social Policy

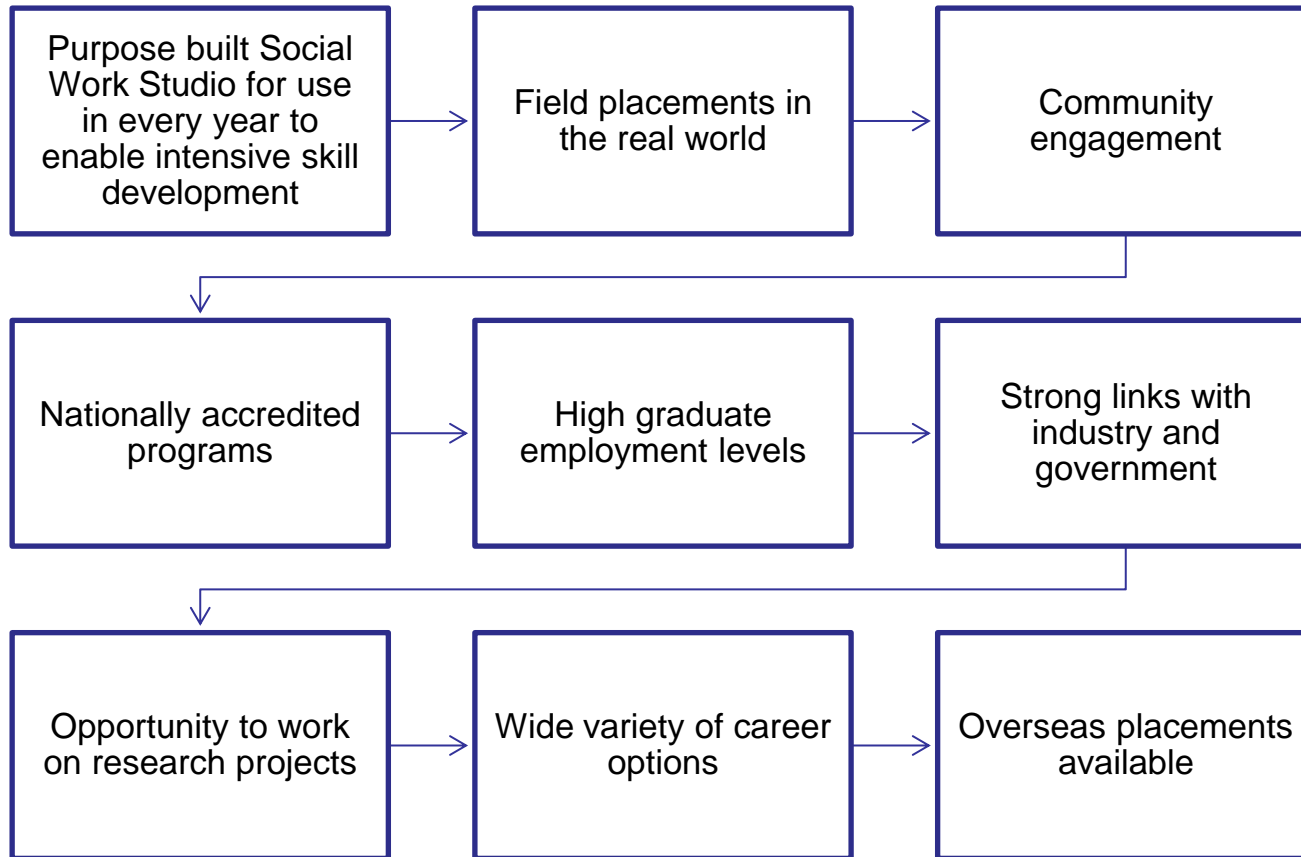
Equipping students with the skills to make an immediate and lasting contribution to society.

## Main Areas of Study:

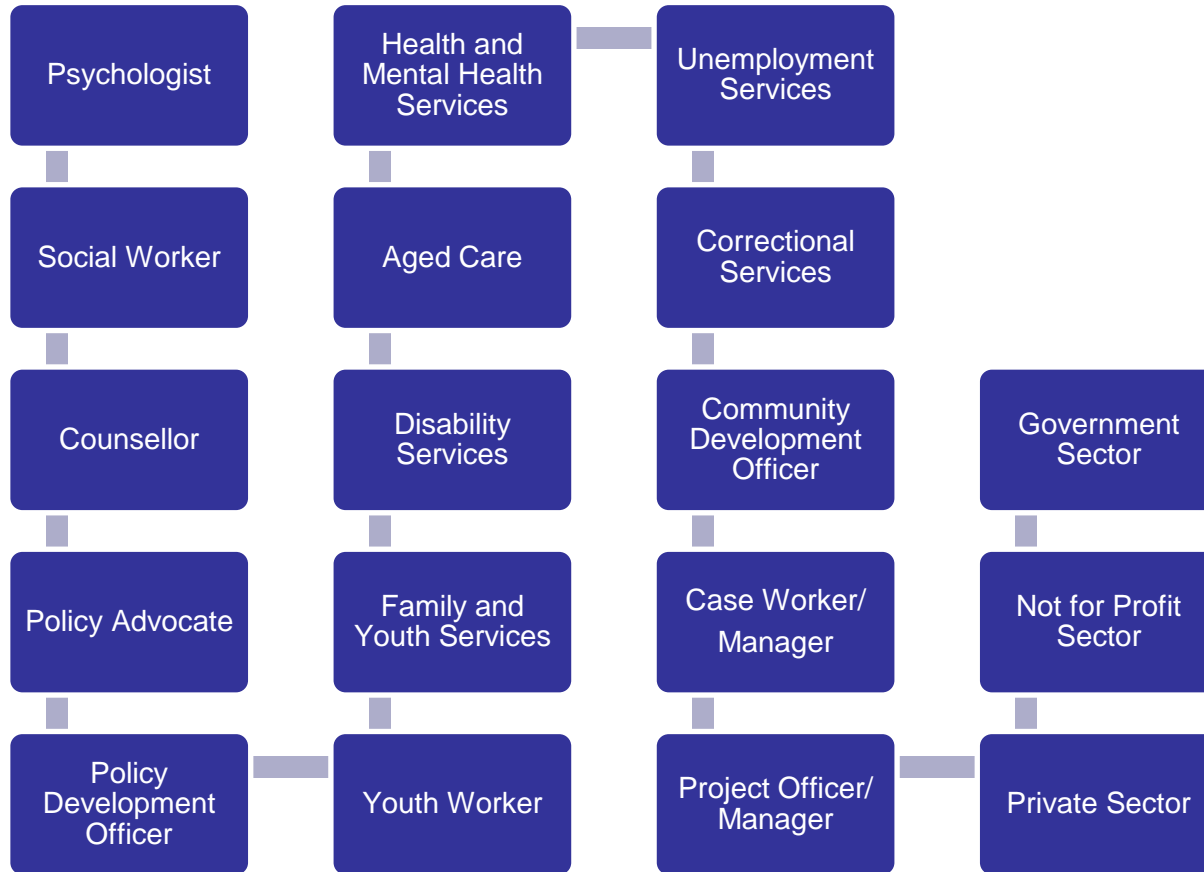
- Psychology
- Social Work
- Human Services
- Mediation and Conflict Resolution



# Why Psychology, Social Work and Social Policy?



# Career Paths – Psychology, Social Work and Social Policy



# Programs and Fees – Psychology, Social Work and Social Policy

Undergraduate Program	2014 Annual Fees (AUD)	2015 Annual Fees (AUD)
Psychological Science	\$21 900	\$23 000
Cognitive Neuroscience	\$24 900	\$26 100
Social Science (Human Services)	\$21 300	\$22 400
Social Work	\$21 300	\$22 400

Postgraduate Program	2014 Annual Fees (AUD)	2015 Annual Fees (AUD)
<b><i>Master Degrees</i></b>		
Social Work	\$21 300	\$22 400



## University of South Australia

[unisa.edu.au/international](http://unisa.edu.au/international)

Telephone +61 3 9627 4854

Fax +61 8 8302 9121

Email [international.office@unisa.edu.au](mailto:international.office@unisa.edu.au)

OR contact one of UniSA's Education Agents via:

[unisa.edu.au/international/your-country/  
representatives.asp](http://unisa.edu.au/international/your-country/representatives.asp)

CRICOS provider number 00121B

The University of South Australia reserves the right to alter, amend or delete any program, fee, course, admission requirement, mode of delivery or other arrangement without prior notice. Information correct at time of printing (February 2012).

### Connect with UniSA



[facebook.com/UniSA](https://facebook.com/UniSA)



[twitter.com/UniversitySA](https://twitter.com/UniversitySA)



[flickr.com/photos/  
unisouthaustralia](https://flickr.com/photos/unisouthaustralia)



[youtube.com/  
unisouthaustralia](https://youtube.com/unisouthaustralia)